

# DIY Cornice Kits

## Assembly Instructions

All Cornice Starter Kits come with instructions for putting the cornices together; we have also included them below. There are no instructions with our Extension Kits, since they are generally used to expand the length of the Starter Cornice Kits.

### General Instructions

Materials needed to assemble your cornice:

Scissors, Ruler or straight edge, Fine point felt tip marker, 4" breakoff utility knife or hack saw, tape measure, and LOW TEMP glue gun and multitemp glue sticks

**DO NOT** leave a glue gun plugged in for an extended time. Hot glue will melt the EPS. We recommend you practice on a small, hidden area prior to applying on your final product.

### Step 1 - Assembling the Cornice

#### A. Measure Your Window Size

Measure the width of your window including blinds, curtains, or molding (whichever is the widest) and add a minimum of 1" per side, or more, according to personal preference.

#### B. Cutting the Cornice Extension (if necessary)

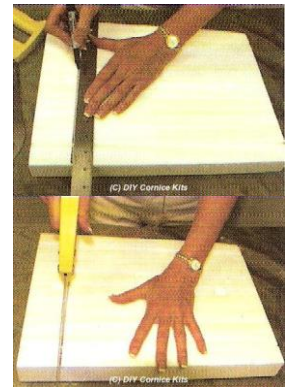
Example: 74" window + 2" on each side = 78" cornice (inside measurement)

Purchase units for 80" opening (1 starter kit and 1 extension kit).

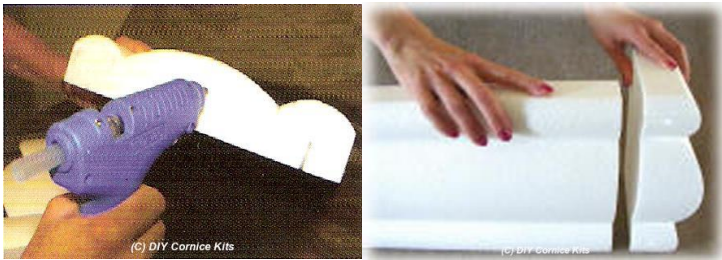
You will need to cut one of the 16" extensions to end up with the 76" length. You will cut 4" from one 16" extension piece. To cut, draw a line, using a ruler as a guide, from top to bottom on the back (flat side) of the cornice. A hacksaw, electric carving knife, or retractable utility knife extended about 4" may be used to cut the polystyrene forms. Use a slow up and down sawing motion rather than trying to slice the piece.

>> Helpful Hint: If you have a "rough" or "crooked" cut, wrap a piece of aluminum foil around the surface to be smoothed. Simply heat a clothes iron and "tap" it against the aluminum foil until the rough surface is smooth again!!

Some of our sellers will cut your cornice to your measurements.



#### C. Joining the Polystyrene Sections



Assemble the cornice using a full size **LOW TEMP GLUE GUN**. Line up the front contour of the cornice evenly and press the pieces together. Apply the glue to the end of the extension and press the end cap to it, aligning the contoured surfaces. Apply the glue liberally, following the shape and making several passes across the middle. Glue only one piece at a time.

### Step 2 - Decorating the Cornice

Watch instructional video for decorating tips at <https://youtu.be/nfWMyWHkYGI>. The video is designed for the Avalon yet is similar to the Elenore for assembling, decorating, and hanging.

#### A. Measure and Cut Your Fabric Strips (see table at end of these instructions)

You will be using fabric strips to cover each contour of your cornice. Determine the fabric width by inserting a tape measure into a fabric groove and bringing it around, insert it into the next fabric groove and add 1" to 1 1/2" depending on the thickness of the fabric. To determine the length of your fabric strips, measure the front of the cornice, add the length of the two returns then add three inches. This will give you enough length to cover the cornice and fold over a hem at each end of the cornice.

>> *Helpful Hint: For a gathered affect add 3", instead of 1", to the width and double or triple the length of your fabric strip, depending upon the amount of gathers you want.*

*If you should run out of fabric or need to start the next piece DON'T PANIC! Simply fold the next strip of fabric over and lay it on top of the first strip. Continue tucking as you have been doing. If your cornice can be seen from the outside or as you walk through an arcadia door, for example, you will probably want to finish the back with fabric as well. As before, measure the length and width and simply tuck into the grooves on the back of the cornice.*

*When tucking the body of the cornice, place the cornice across a tabletop to provide support. Do not prop it up on the ends of the returns and tuck the fabric. EPS is very strong, but can be broken. If you should accidentally break a section, however, you can simply glue it back together!!*

**B. Applying Your Fabric Strips**

*Cover the top and bottom contours first. Lay the fabric over the top of your cornice. Position the fabric so it can tuck into both the front and back fabric grooves and around the full width of the cornice around the side to each return end. Start at the center of the cornice and work toward the return edges, tucking fabric into the front tuck groove first. Trim the fabric on the return ends to one inch and fold under to give a finished look where the return meets the wall.*



**#1-**To create the mitered fabric corner, #1-fold the fabric strip over the top of the cornice and cut along the inside edges of the return to the back of the cornice on both sides.



**#2-**Flip the fabric strip to the front of the cornice and cut along the inside of the front to the inside of the return, creating a "flap" on both ends of the cornice.



**#3-**Tuck the flap for the return into the tuck groove.



**#4-**Fold the fabric strip from front to back, creating a mitered corner as you bring it back.



**#5-**Tuck fabric strip into back tuck groove.

**Step 3 - Hanging Your Cornice**

**IMPORTANT:** *Different cornices have their mounting groove on the back of the cornice in different places. Make sure you identify where the groove is for your particular cornice so that your bracket placement will be perfect.*

**A. Installing the Hardware**

*To mount each hardware bracket, use the two wall anchors and two screws included. After determining the appropriate placement for the hardware based on the desired height and width of the cornice, mark the wall through the slot where you will place the two anchors and screws. Drill holes, tap in both anchors, screw in the top screw, leaving 1/16" between the head of the screw and the wall/anchor. Set the hardware onto the screw, lower the bracket in place, and then tighten the screw. Insert and tighten the lower screw.*

**B. Hanging Your Cornice**

*Push the bracket flange into the back tuck groove running horizontally along the back of the cornice. If the cornice is not quite centered on the window re-insert the bracket flange in the tuck groove to center the entire cornice on the window.*

Elenore Cornice Drop	Top Rail Width	Thick Fabric Width	Thin Fabric Width
7" Drop	2 in	6 1/2 in	7 1/2 in
9" Drop	4 3/4	6 3/4	7 3/4
12" Drop	3 1/2 in	8 1/2 in	9 1/2 in

Elenore Cornice Drop	Bottom Rail Width	Thick Fabric Width	Thin Fabric Width
7" Drop	5 in	9 1/2 in	10 1/2 in
9" drop	5 1/2	10 in	11 in
12" drop	9 in	14 1/4 in	15 3/4 in

Elenore Cornice Drop	Back Rail Width	Thick Fabric Width	Thin Fabric Width
7" Drop	4 1/2 in	6 1/4 in	7 1/4 in
9" drop	7 in	9 in	10 in
12" drop	9 in	11 in	12 in